



Features at a glance

- Commercial grade aluminium frame structure
- Stainless steel hardware for longevity
- Durable high performance hub and fittings
- Telescopic mast enables umbrella to clear most furniture when closing
- Robust 82.5mm diameter mast with 3.4mm wall thickness
- Tough, commercial grade 50 x 25mm strut arm profile



Accessories



Rain Gutter
Adjoining square umbrellas can be connected with removable rain gutters to increase weatherproof area.

Canopy

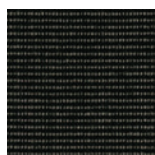
- Marine solution-dyed fabric
- Waterproof Rating: >300mm water column
- Maintenance: All fabrics can be washed and replaced
- Weight: 315 g/m²
- Colourfastness: 7-8/8
- Shade Rating: UPF 80 UV Protection

RECASENS
BCN  1886

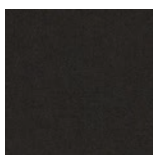
Stock Colours



Oyster White



Charcoal Tweed



Black

Special-Order Colours**



Ocean Blue



Sunflower Yellow



Logo Red

**Other Special Order Colours available on request.

BEST-IN-CLASS WARRANTY

Relax easy knowing your outdoor umbrella purchase is protected by the industry's best warranty (conditions apply) and customer support.



**Fabric
Warranty***

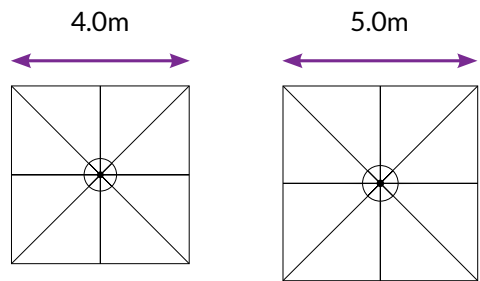


**Frame
Warranty***

SU10

COMMERCIAL CENTRE POLE UMBRELLA

Size & Configuration



Mounting Options

Surface Plate
For deck, patio and concrete mounting.

Note: Fastenings are not supplied for the Surface Plate.

In-Ground Anchor
For mounting with a concrete footing.

Free-Standing Base + Aluminium Base Cover
For complete customised manoeuvrability.

*Optional Castor Wheels shown.
Note - Concrete Pavers are required for ballast (not supplied).*

Umbrella Dimensions

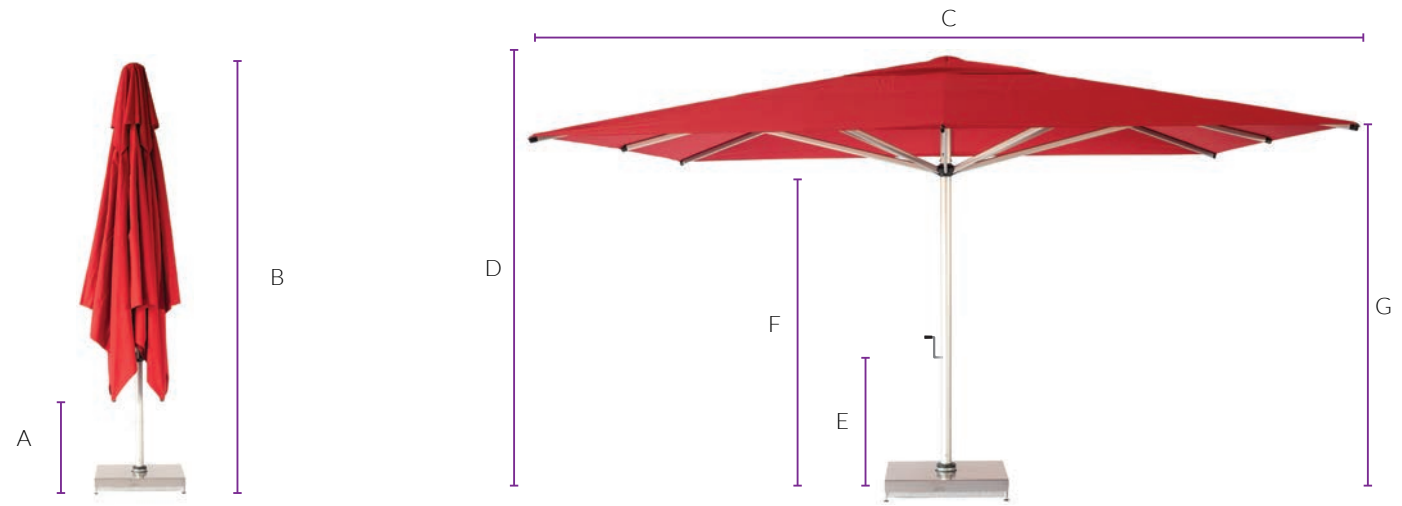


Diagram Legend

	4.0m Square	5.0m Square
A Closed Canopy Clearance***	900mm	730mm
B Overall Height When Closed***	3740mm	4280mm
C Canopy Width	4000mm	5000mm
D Overall Height***	2870mm	3120mm
E Winder Handle Height***	840mm	920mm
F Hub Height***	2110mm	2260mm
G Arms Height***	2270mm	2470mm

***Free-Standing Base installations will add 177mm to the height and surface plates will add 19mm to the height. Adding Free-Standing Base wheels will add a further 45-80mm. All sizings are approximate only and subject to change without notice.



shadowspec
umbrellas with distinction