

WATERCO

water, the liquid of life

www.waterco.com

ELECTROCHLOR PLUS Mineral chlorinator



- Intelligent and energy saving
- pH monitoring and control
- Informative LCD display
- Low salt alarm and flow protection
- Variable speed pump and LED light control
- Self cleaning chlorinator cell
- Dual timer-controlled power outlets



Electrochlor Mineral Chlorinator

Electrochlor Mineral Chlorinator makes your pool smarter by automatically taking care of sanitisation, filtration and auxiliary equipment so you don't have to! This one device will monitor and display everything you need to know about your pool in real time.



pH monitoring and control

Electrochlor uses a pH sensor to monitor the pH in the pool.



Pool water temperature display and low salt alarm

If the salt level in the pool water is too low or too high, Electrochlor automatically reduces the output and displays the corresponding alarm. A digital time stamp of high salt levels is also recorded. Pool temperature is also measured to eliminate false low salt level readings often attributed to low water temperatures.



Four independent timers

Multiple timers allow you to control the pump, pool light and auxiliary equipment conveniently from one compact unit.



Switch mode power technology

Electrochlor uses the latest Switch Mode Power Technology to increase energy efficiency by over 50%, significantly reducing power consumption. Electrochlor draws less current and this translates to high power conversion and less energy wastage, without compromising chlorine output.



Battery backup power pack

Automatically saves your settings in the event of a power outage.



Dual general power outlets control

Electrochlor Plus includes two GPOs – one for the pool pump and another for a pool light or auxiliary device that needs to be operated under a timer.

Note: Please refer to Electrochlor's technical specifications for the maximum allowable load.



Variable speed pump control

Easily control a variable speed pump and switch it on and off by connecting it to Electrochlor via a communication cable.

Note: This feature is only enabled when a Waterco variable speed pump is installed.



Pump protection and low flow detection

In case water flow is not detected, Electrochlor protects the pump by shutting it down, and then automatically displays the corresponding alarm.

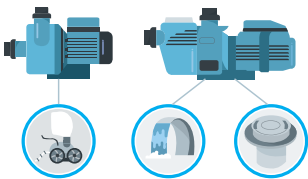
In the event of a “no-flow” condition, Electrochlor will increase the pump speed and if the “no-flow” condition is resolved, it will maintain the new speed to keep the pool pump running.

Note: This feature is only enabled when a Waterco variable speed pump is installed.



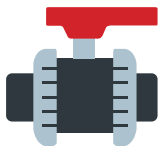
LED light control

Electrochlor features a dedicated GPO to control your pool or garden lights.



Dual-pump control

Control another pump in conjunction with a variable speed pump simultaneously, which means you can operate your in-floor pool cleaning pump or pressure pool cleaner at the same time as your main pool pump.



Interlocking function

Program, activate and simultaneously control multiple pool equipment such as the control valve, and determine the minimum required water flow for ancillary functions.



Super chlorination function

Chlorine production is raised to 100% during a 24-hour period to super-chlorinate the pool, then returns to its pre-set operating condition once completed.



Low chlorine mode

Low chlorine production can be easily activated via a pool cover or a pool controller by sending a signal to the chlorinator. This mode reduces chlorine production to 10%, while active.



Quick troubleshooting

A diagnostic menu helps service technicians quickly identify potential issues.

Electrochlor Mineral Chlorinator
makes your pool smarter by
taking care of the equipment,
so you don't have to!



Chlorination

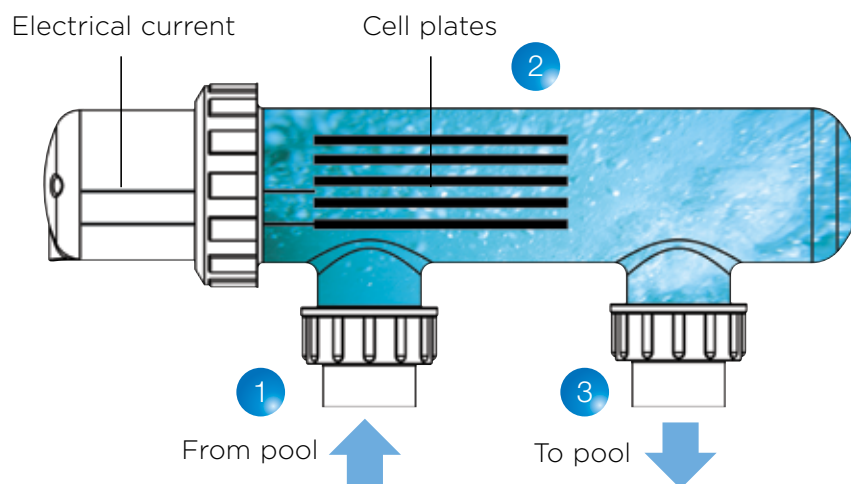
A chlorine generator's primary function is to produce chlorine for the pool, which is essential in preventing the recurrence of common strains of algae and bacteria. The chlorine then turns back into salt, and the system continues as long as the generator is functioning correctly.

This sophisticated yet straightforward pool care solution consists of a Power Pack (power supply) and an electrolytic salt cell where the chlorine is produced.

Self-Cleaning Cell

The Electrochlor power pack powers up the salt cell to enable chlorine production.

Periodically the power pack reverses the polarity of the power supply to the salt cell to help clean the cell of calcium deposits.



1. Pool water containing Mineral Crystals / pool salt.
2. Mineral Crystals / pool salt split into basic components, one of them chlorine gas.
3. Chlorine gas dissolves in pool water, residual level keeps the water sanitised and safe for the swimmer.

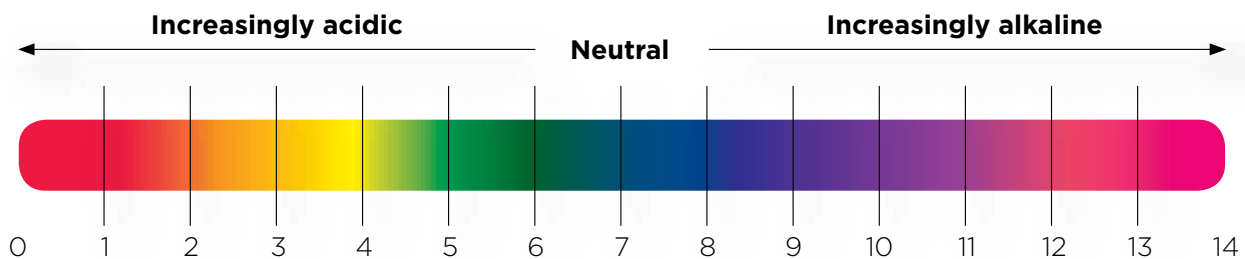
pH Control and Monitoring

Electrochlor Plus automatically controls pH balance through feedback from inline sensors.

The right pH balance of your pool water is essential for many reasons: your pool is sanitised effectively, protects the pool's surface and equipment from corrosion or scaling, reduces irritations like red eyes and creates a more pleasant swimming experience.

About pH

pH is a measurement of the acidity or alkalinity of a solution. It provides a value on a logarithmic scale from 0 to 14, 7 is neutral, less than seven is acidic and greater than seven is alkaline (or basic). The closer you move towards 0, the more a solution is acidic, and the closer you move to 14, the more a solution is alkaline.



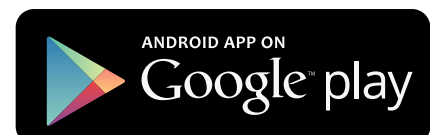
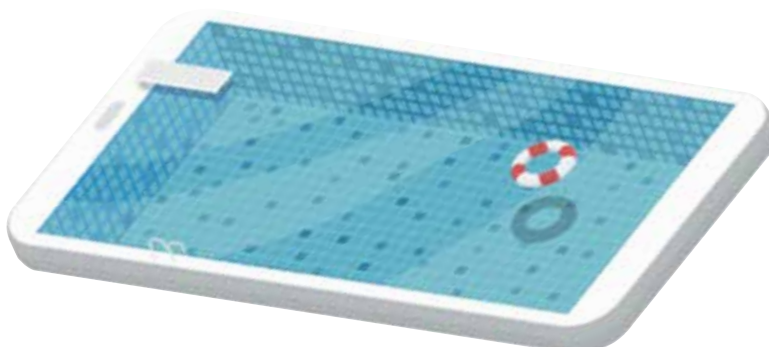
pH and Chlorine

The effectiveness of a sanitiser like chlorine depends heavily on the pH. At a pH of 7.2, the effectiveness of chlorine is close to its peak. However, at a pH of 7.8, the chlorine loses approximately 80% of its sanitiser power.

Wifi with Mobile App Control

Electrochlor is so advanced that you can monitor your pool through a mobile app. Via My Waterco Connect app, you can control and monitor the critical functions of the Electrochlor.

- * Pool temperature display
- * Monitor pH level
- * Switch on/off pool lights
- * Control and monitor the pool pump and auxiliary equipment
- * Receive pool alerts



Electrochlor Plus automatically controls pH balance through feedback from inline sensors.



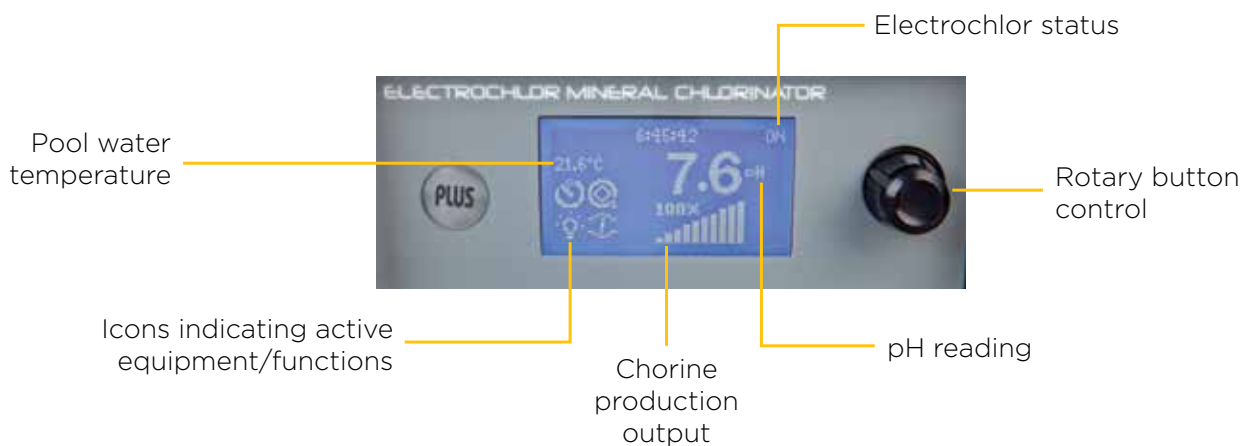
Energy Efficient Power Pack

Electrochlor monitors the chlorine production by regulating the amount of electrical energy supplied to the Salt Cell. Electrochlor uses the latest Switch Mode Power Technology to increase energy efficiency by over 50%.



Informative Display

A snapshot of everything you need to know about your pool's status and current active functions are clearly displayed in one place.



Titanium Salt Cell

Consists of a series of titanium electrodes with opposite charges. Waterco's clear salt cell housing, is constructed using clear UV stabilised acrylic, and allows you to visually inspect the salt cell plates.

Large lock ring for easy access.

Unobtrusive cradle design to minimise calcium build up.

Titanium Electrolytic Cell - serial parallel design enhances chlorine production, whilst requiring less energy.



Hydraulic efficient design.

50mm connections for quick connection to pipe work.

Durable UV stabilised engineering plastic cell housing.



Mineral Swimming Pool

Electrochlor was specially designed to work in synergy with Waterco's Mineral Crystals to transform your pool into a therapeutic oasis.

Magnesium enriched water

Magnesium has been recognised by medical professionals and consumers all over the world for its ability to alleviate a variety of ailments relating to the skin, muscles and nervous system.

Absorbing Magnesium, directly through your skin as you swim, provides a range of lifestyle benefits, including:

- Reduced muscle aches, pains, cramping and spasms
- Healthy skin and reduced outbreaks of eczema and psoriasis

Mineral Crystals

Mineral Crystals not only improves your pool water with a blend of naturally occurring minerals but also moisturises your skin as you swim. In fact, the common effects associated with swimming in a chlorinated pool, including red eyes and dry skin, are significantly relieved with Mineral Crystals. Its gentle formulation that has little to no taste and can be used in any type of pool.

‘Transform your pool into
a therapeutic oasis,’



Salinity Level – Operation:

TDS Levels (ppm)

Minimum = 4,000 Optimum = 5,500 Maximum = 6,000

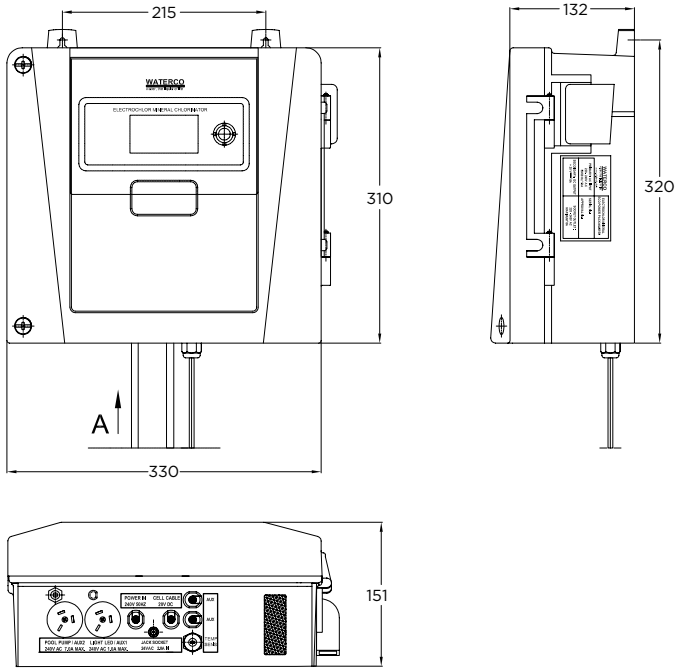
Note: Low salinity level will reduce the life of the chlorinator cell and lead to low chlorine production

Three Year Warranty:

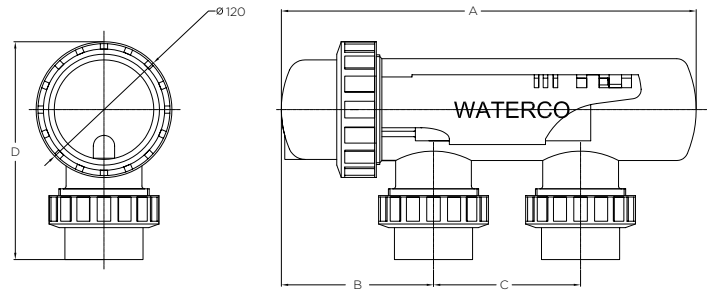
Electrochlor Plus	3 years
Standard Salt Cell	3 years
Power pack	3 years
Commercial Installations	1 year

*Please refer to Waterco's Warranty terms and conditions.

Power Pack Dimensions



Chlorinator Cell Dimensions



Model	A (mm)	B (mm)	C (mm)	D (mm)
20 g/h,	367	134.5	130.0	192.5
25 g/h,				
30 g/h				

Technical Specifications

Model	Chlorine Production (g/hr)	Max Pool Capacity (L) Climate	
		Temperate	Tropical
Electrochlor Plus 2000	20	60,000	48,000
Electrochlor Plus 2500	25	80,000	60,000
Electrochlor Plus 3000	30	100,000	72,000

	2000	2500	3000
Primary Input (Volts) / Frequency (Hz)	170-264V/ 47 - 64 Hz	170-264V/ 47 - 64 Hz	170-264V/ 47 - 64 Hz
Input Power (W)	105	115	130
Output Current (A)	5.4 (DC)	5.8 (DC)	6.0 (DC)
Maximum Total Current (A)	10	10	10
Pump Outlet Maximum (A)	8	8	8
Cell Voltage (V)	21	21	21
Degree of Protection	IP23	IP23	IP23

These chlorinators are approved and conform to AS3136 Swimming Pool Equipment, as a prescribed article under Australian Registration. These Chlorinators conform to the Australian Electromagnetic Compatibility Standard marked by the C-tick.

WATERCO

water, the liquid of life

Waterco pioneers reliable solutions for healthy, safe water environments, which are used in residential, commercial and industrial applications in over 40 countries.

Established in 1981, it has since become a global brand recognised for designing and manufacturing filtration and sanitisation innovations for the swimming pool, spa, aquaculture, and water purification sectors.



CONTACT WATERCO

Waterco's head office is situated in Sydney, Australia with international offices, manufacturing plants and warehouses located in Australia, New Zealand, Malaysia, Indonesia, Singapore, China, the US, Canada, and the UK.

OFFICES - AUSTRALIA

NSW - Sydney (Head Office)
Tel: +61 2 9898 8600
QLD - Brisbane
Tel: +61 7 3299 9900
VIC/TAS - Melbourne
Tel: +61 3 9764 1211
WA - Perth
Tel: +61 8 9273 1900
SA/NT - Adelaide
Tel: +61 8 8244 6000
ACT Distribution
Tel: +61 2 6280 6476

OFFICES - OVERSEAS

Waterco (Europe) Limited
Sittingbourne, Kent, UK
Tel: +44 (0) 1795 521 733
Waterco (USA) Inc
Augusta, Georgia, USA
Tel: +1 706 793 7291
Waterco Canada
Boucherville, Quebec, Canada
Tel: +1 450 748 1421
Waterco (NZ) Limited
Auckland, New Zealand
Tel: +64 9 525 7570

Waterco (C) Limited
Guangzhou, China
Tel: +86 20 3222 2180

Waterco (Far East) Sdn Bhd
Selangor, Malaysia
Tel: +60 3 6145 6000

PT Waterco Indonesia
Jakarta, Indonesia
Tel: +62 21 4585 1481

Waterco Singapore Intl Pte Ltd
Nehsons Building, Singapore
Tel: +65 6344 2378

DISTRIBUTED BY:



ZZB1985 08/20