



BAKER HYDRO

SAPPHIRE FIBREGLASS FILTER

Environmentally Friendly Media Filter



Sapphire media filters feature an internal hydraulically efficient system, which facilitates energy and water savings.

- Water savings of up to 30%
- 50mm Multiport Valve, reducing water flow resistance
- Ideal for low powered and energy efficient pumps
- Improved water clarity



save
time



save
water



save
energy



Fiberglass wound construction

Sapphire filters embody the latest in fibreglass winding technology. Sapphire fibreglass vessels consist of an inner shell of fibreglass reinforced with multiple layers of continuous strands of fibreglass filaments.



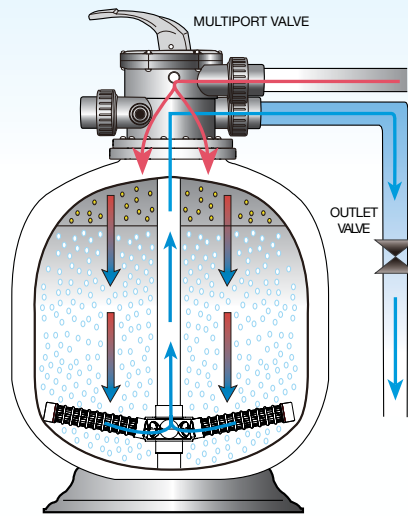
Depth Filtration

The Sapphire operates on the basis of "Depth Filtration"; dirt is driven through the filter bed and trapped in minute spaces between the particles of filter media allowing the cleansed water to pass through the filter's laterals and exit via the filter's Multiport valve.

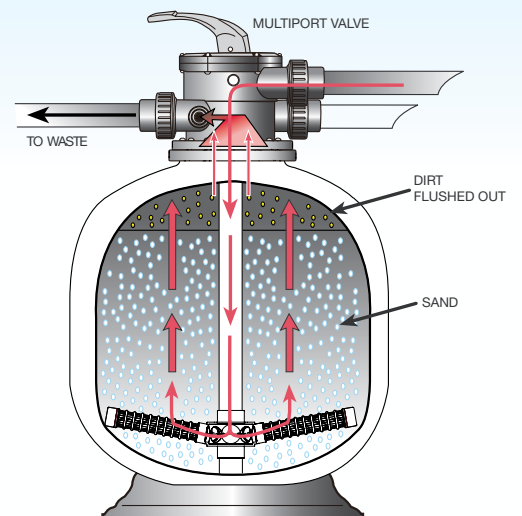
Simple Maintenance

Cleaning the filter simply requires turning the filter's Multiport lever from the "filter" position to the "backwash" position, which reverses the flow of water in the filter, flushing the filter bed.

Filter Mode



Backwash Mode

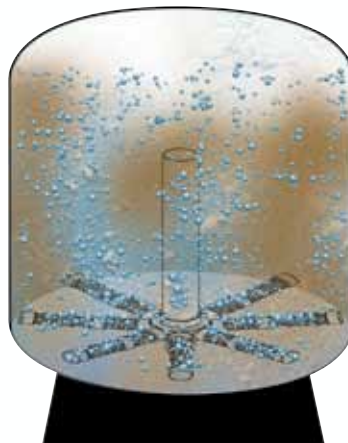


Water Saving "Fish Tail" laterals

Sapphire is equipped with "Fish Tail" laterals, to improve its filtration and backwashing hydraulic efficiency.

Fish Tail laterals provide effective coverage of the filter bed and balanced water flow, during backwashing.

Sapphire's backwash time is significantly reduced, leading to a 30% savings of backwash water.



Conventional filter lateral system



Sapphire Fish Tail lateral system

Energy Saving "Fish Tail" laterals

The Sapphire's hydraulic efficiency halves the backwash flow rate of a conventional sand filter, allowing the option for low powered, energy efficient pumps for filtration flow and backwash flow.

Enhanced Water Clarity

Lowering a filter's flow rate not only significantly decreases the pump's energy requirements, but also reduces water flow resistance in your pool equipment and plumbing.

A lower flow rate also has the added benefit of enhancing your pool's filtration efficiency, greatly enhancing the clarity of your swimming pool water.

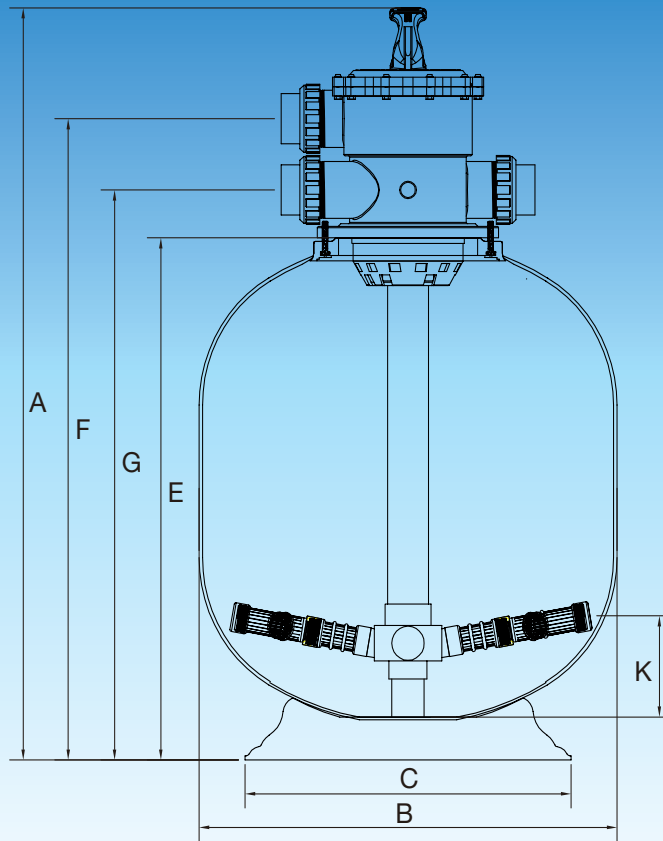


50mm Multiport Valve

1. Metric or imperial quick connect unions.
2. Glass filled thermoplastic.
3. Durable lever action handle.
4. 6 way multiple valve positions.
5. High grade stainless steel components.
6. Pressure gauge.
7. Wear resistant rotor.
8. Clear sight glass for backwash inspection.

Reduced Water Flow Resistance

Sapphire filters area equipped with a hydraulically efficient 50mm Multiport Valve to reduce the filter's overall resistance to water flow.



Technical Specification

Filter Model	Valve Size	Inner Diameter	Filter Area	Bed Depth	Max Flow	Max Pool Size	Min Backwash	Media Volume	Sand 16/30	Zeolite 1 - 2.2	Glass 0.6-0.8
	mm	mm	m2	mm	(lpm)	(litres)	(lpm)	(litres)	(kg)	(kg)	(kg)
Sapphire 602	50	600	0.28	295	226	81,400	188	106	155	127	171
Sapphire 702	50	700	0.38	340	308	110,800	257	154	225	185	249

Dimension (mm)

Model	A	B	C	E	F	G	K
Sapphire 602	1085mm	622mm	484mm	735mm	905mm	805mm	143mm
Sapphire 702	1072mm	723mm	620mm	722mm	892mm	792mm	122mm

Warranty

Sapphire is covered by a 10 year tank warranty and 1 year warranty on all other components.

Commercial installations are covered by a 5 year (1 year full + 4 year pro rata) tank warranty and 1 year warranty on all other components.

Please refer to Baker Hydro's warranty terms & conditions.



The LEADER In Filtration and
Water Treatment For Over 50 Years

www.bakerhydro.com

NSW
Sydney (Head Office)
Tel: (02) 9898 8686
Fax: (02) 9898 1754

QLD
Brisbane
Tel: (07) 3299 9900
Fax: (07) 3299 9911

VIC/TAS
Melbourne
Tel: (03) 9764 1211
Fax: (03) 9764 0577

WA
Perth
Tel: (08) 9273 1900
Fax: (08) 9273 1999

SA / NT
Adelaide
Tel: (08) 8244 6000
Fax: (08) 8244 6011

Waterco (NZ)
Auckland
Tel: (09) 525 7570
Fax: (09) 525 6580