

GOVAC™

GOVAC™ cleans the bottom of your pool automatically and works with all major brands of soft wall pools. The cleaner is a unique, automatic suction side cleaner that is compatible with pumps as low as 32W (3.03m³/h) or 800gal/h. The cleaner is equipped with a pressure regulator that can be adjusted to work with pump with a water flow rate up to 2000gal/h (7.5m³/h). The cleaner has a filter cage that prevents the clogging of your filtration system and uses the diaphragm technology for a silent automatic cleaning of your pool.

WARNING!

- THIS IS NOT A TOY!
- Do not let children use or play with the cleaner.
- Do not allow swimming in the pool when cleaner is in operation.
- TURN OFF THE PUMP prior to connecting the cleaner to the pool.
- If there are stones, roots or metal corrosion in contact with the underside of the liner, discard them prior to installing the cleaner. If necessary, seek assistance from a qualified professional.
- If the liner is brittle, damaged or wrinkled, contact a qualified professional to perform the necessary repairs or perform a liner replacement prior to installing the cleaner.
- Make sure the cleaner is not in the pool during chemical sanitization.
- TURN OFF THE PUMP prior to servicing the cleaner or performing maintenance of any kind.

Initial Set-up

- Close the main drain at the bottom of the pool.
- Make sure the pump and pool filters are clean.
- Make sure the hoses are straight. Otherwise, place them under sunlight for a few hours to straighten them.
- If your pool is filled with leaves or large debris at the bottom, they must be removed using a leaf rake (not included) prior to operating the cleaner. This will prevent the filter cage from filling up too quickly and allow the smaller particles to be collected instead.
- For above ground pools with two pool water outlets – refer to the cleaner's instruction manual and connect it to one of the water outlets and block the second one according to the pool's instruction manual. For example, use a pool plug to block the outlet or set the control valve (e.g. plunger valve) to the closed position (if available). Otherwise, it will decrease the water flow inside the cleaner and cleaner performance may be impacted as a result (i.e. capturing less debris, not moving/moving slowly, poor pool coverage, etc.).

WARNING! TURN OFF THE PUMP BEFORE YOU CLOSE THE WATER OUTLET.

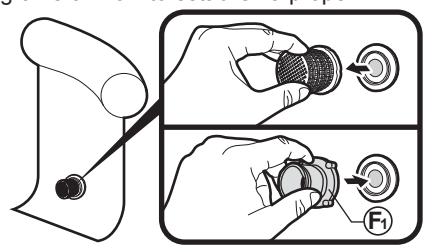
HOSE CONNECTOR ASSEMBLY

WARNING! TURN OFF THE FILTRATION SYSTEM PRIOR TO ASSEMBLING ANY HOSE CONNECTORS.

4 connectors (F1/F2/F3/F4), vacuum plate (L) and Green short hose (A) enable the cleaner to fit most brands of above ground pools on the market. Select the right hose connector and refer to the following diagrams on how to establish a proper connection to the strainer on the water outlet of your pool.

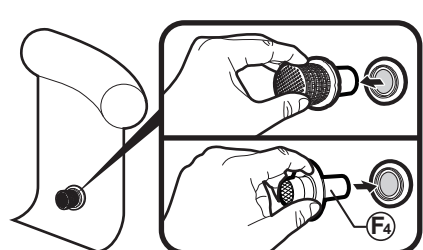
Ø40mm (1½in) Strainer plug with removable grid cover

Detach the strainer cover and press "F1" on it.



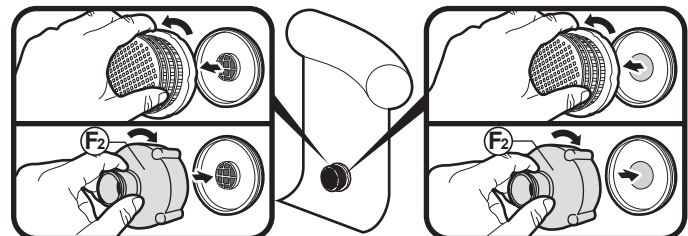
Ø40mm (1½in) Strainer plug with non-removable grid cover

Refer to the pool's instruction manual to remove the strainer plug from the water outlet and then insert "F4" connector as shown. Note: if your pool's strainer plug is attached to a hose with a hose clamp and secured inside the pool water outlet, you may need to loosen the hose clamp to release the strainer plug. Pay attention not to detach the pool hose from the water outlet when loosening the hose clamp. Remove the plug and insert the "F4" connector into the water outlet as far as possible. Tighten the hose clamp to secure the pool hose and the connector to the water outlet.



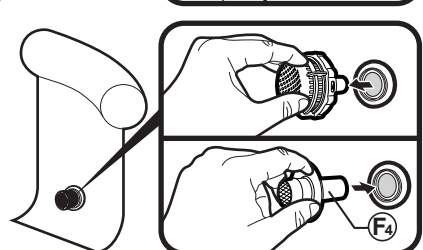
Ø80mm (3in) Strainer plug with removable grid cover

Unscrew the strainer cover and screw onto "F2".



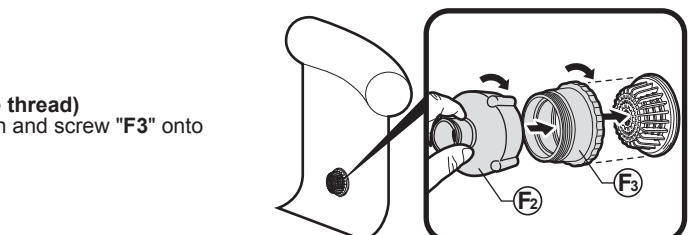
Ø80mm (3in) Strainer plug with non-removable grid cover

Refer to the pool's instruction manual to remove the strainer plug from the water outlet and then insert "F4" connector as shown. Note: if your pool's strainer plug is attached to a hose with a hose clamp and secured inside the pool water outlet, you may need to loosen the hose clamp to release the strainer plug. Pay attention not to detach the pool hose from the water outlet when loosening the hose clamp. Remove the plug and insert the "F4" connector into the water outlet as far as possible. Tighten the hose clamp to secure the pool hose and the connector to the water outlet.



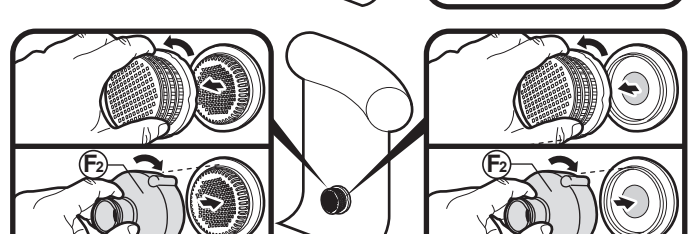
Ø92mm (3¾in) Strainer (with side thread)

Screw "F2" onto "F3", and then align and screw "F3" onto the strainer.



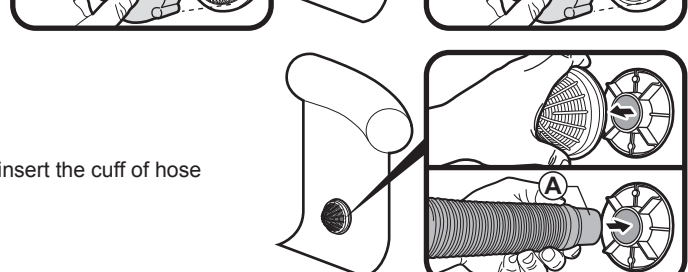
Ø110mm (4¼in) Strainer

Unscrew the strainer cover and screw "F2" onto the middle thread of the strainer.

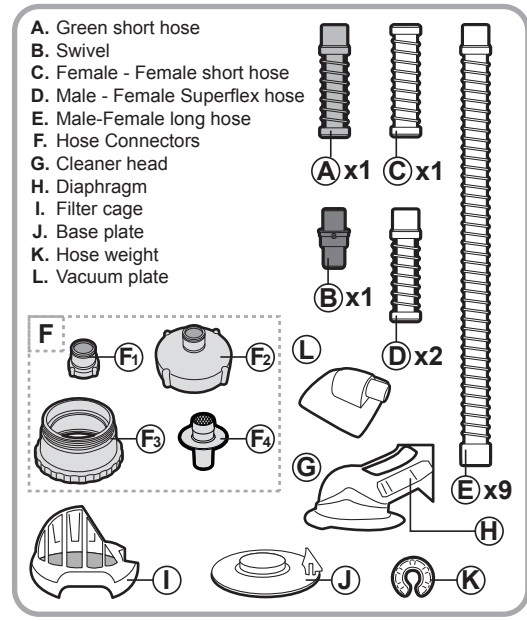


Ø36mm (1½in) Strainer hole

Remove the grid cover and directly insert the cuff of hose (A) into the strainer hole.

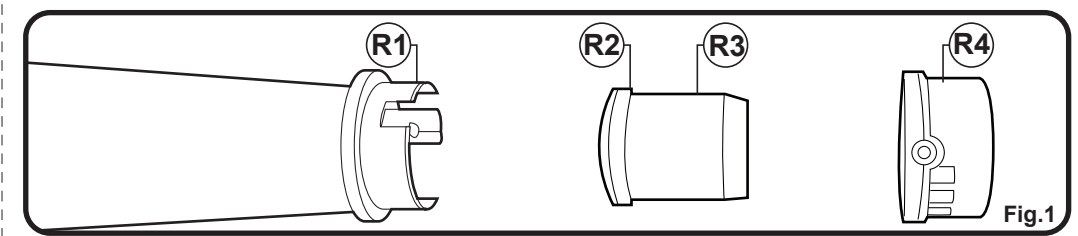


GB | Above-ground pools Automatic Cleaner

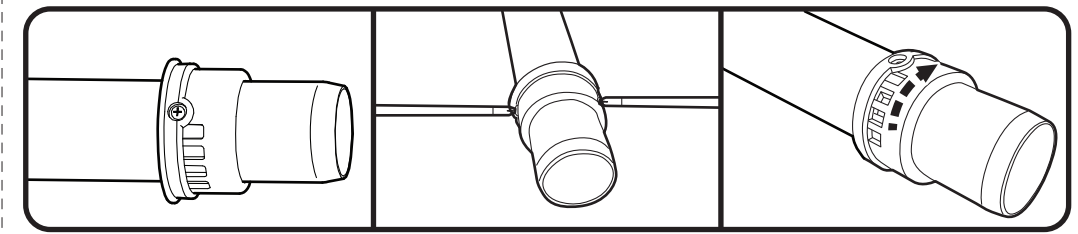


PRESSURE REGULATOR ADJUSTMENT

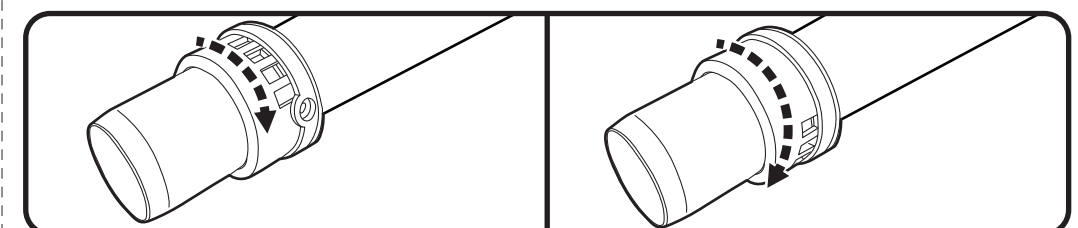
Excessive water flow from the pump / filtration may result in the cleaner being stuck to the pool bottom. On the contrary, insufficient water flow may inhibit the cleaner's movement. The cleaner includes a pressure regulator at the top that can be adjusted for pumps with a flow rate up to 2000gal/h (7.5m³/h). The default setting of this regulator is designed for use with pumps with a flow rate of 1500gal/h (5.6m³/h) or less. The pressure regulator is made up of parts R1 thru R4 shown. (Fig.1)



WARNING! TURN OFF THE PUMP BEFORE ADJUSTING THE PRESSURE REGULATOR.



Default setting (no opening on grid) is designed to use with pumps with a flow rate of 1500gal/h (5.6m³/h) or less. To alter the setting, unscrew both screws from R4. To achieve minimum pressure release, rotate R4 clockwise until a small opening is exposed on R1 (ensure the screw holes on R4 and R1 are aligned).



To achieve medium pressure release, rotate R4 clockwise further, a bigger opening (2 holes) on R1 is then exposed (ensure the screw holes on R4 and R1 are aligned). To achieve maximum pressure release, rotate R4 clockwise further and all holes should be unblocked on R1 (ensure the screw holes on R4 and R1 are aligned). This setting is recommended for pumps with a flow rate up to 2000gal/h (7.5m³/h).

Align the screw holes on R4 and R1 and tighten the screws accordingly once the ideal pressure release setting is selected.

Remark: Pumps of the same horse power rating from different brands may vary in performance. You may need to adjust the regulator for additional pressure release if the cleaner is stuck to the pool floor and does not move because of excessive suction. CAUTION! Do not expose the regulator to air while it is in operation, otherwise air might be trapped and affect the cleaner / pool pump / filtration operation as a result.

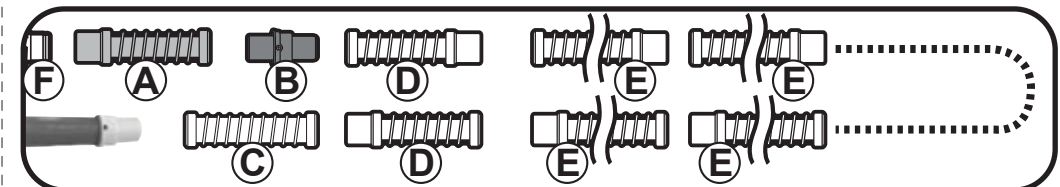
HOSE SECTIONS ASSEMBLY

The total length of assembled hoses should be half to one hose section length longer than the length measured from the pool strainer (water outlet) to the farthest point in the pool. (Fig.2)

Refer to the diagram sequence below and connect the hose sections accordingly:

- Strainer connector (F)
- Green short hose (A)
- Swivel (B)
- Male-female superflex hose (D)
- Male-female long hose (E)
- Superflex hose (D)
- Female-female short hose (C)

The quantity of male-female long hose (E) will depend on the length required for your pool and must be connected between the 2 male-female superflex hose (D) below. Make sure to connect the female-female short hose (C) to the cuff of the cleaner.



IMPORTANT NOTE:

- The swivel (B) allows the cleaner to turn smoothly. Do not alter its position or remove it.

For 610cm (20ft) round / rectangular pools, connect all 9 male-female long hose (E) and all 2 superflex short hoses (D) included.

For 457cm (15ft) & 485cm (16ft) round / rectangular pools, connect 7 male-female long hose (E) and 2 superflex short hoses (D) included.

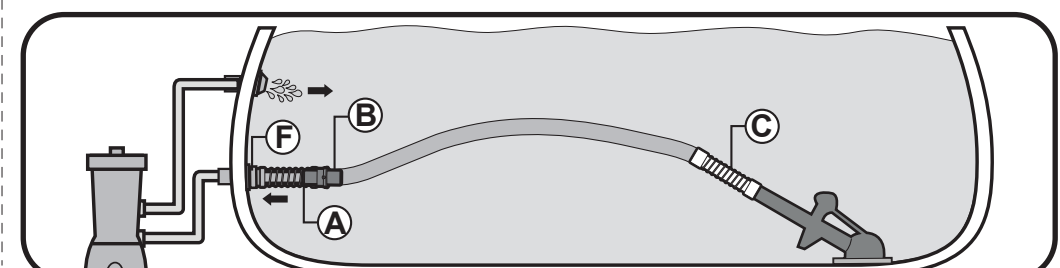
For pools in size smaller than 457cm (15ft), reduce the number of male-female long hose (E) until total length of hose assembly is equivalent to the length from skimmer/dedicated suction line to the farthest point in the pool plus a length equal to hose (E).

Immerse the hoses into the water one by one in the correct sequence to expel the air. Be sure to complete the hose connection underwater. Alternately, you can connect all hoses together and place either opening end towards the pool water inlet to let water flow expel the entrapped air.

Trapped air in your cleaning system may prevent the pump from operating smoothly. If this happens, switch off your pump, open the release valve (if applicable) on your filter and let air escape until only water comes out from the release valve, then close the valve.

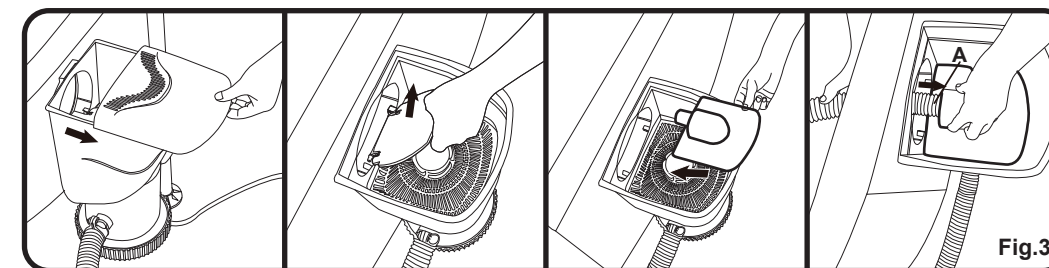
Refer to your filtration manual on how to release the air.

Once your cleaner is connected to the pool, turn on your pump. The cleaner will then begin cleaning the bottom of your pool. Operation will continue until the filter cage is full of debris. NOTE: Clean the filter cage prior to use every time.



WALL-SKIMMER VACUUM PLATE ASSEMBLY

The vacuum plate provided is designed for a common wall skimmer-type filtration system on the market. If it does not fit your wall skimmer, contact your pool dealer for a compatible one. Refer to the instructions of your pool / filtration manual to remove the skimmer cover and weir. Place the vacuum plate over the strainer and press downwards as shown. Connect the open end of the green short hose (A) to the vacuum adaptor and slide it in as far as possible. (Fig.3)

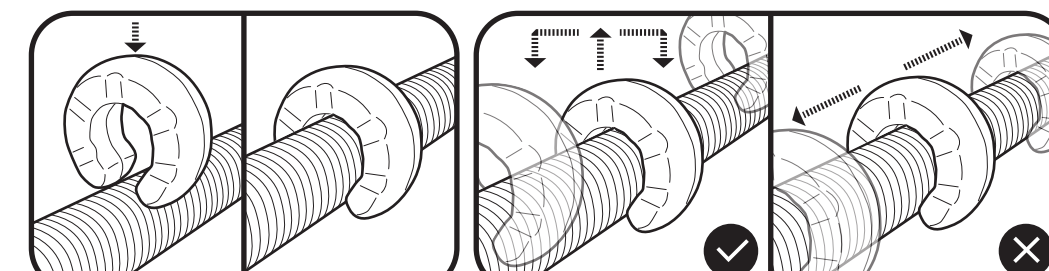


IMPORTANT!

- Once all is set up, turn on the pump and ensure the vacuum plate is securely attached to the strainer. Otherwise, press on the vacuum plate to make sure it is secured in place.
- Make sure the pool water level is above the vacuum plate, otherwise it will take in air during operation.

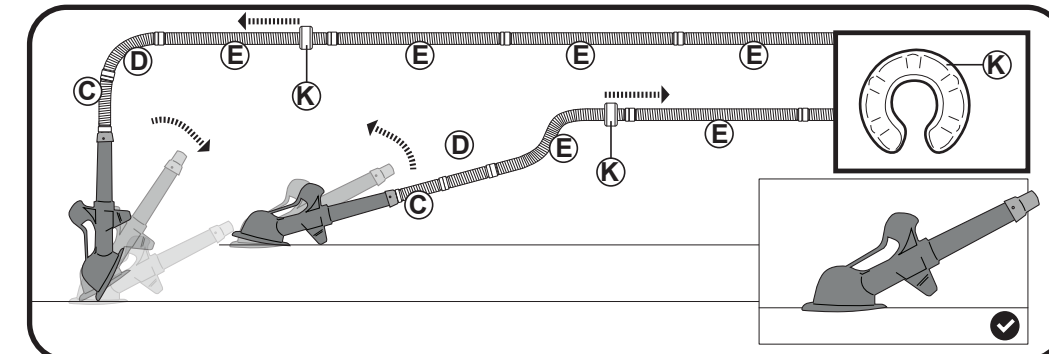
HOSE WEIGHT APPLICATION

WARNING! DO NOT ATTACH THE HOSE WEIGHT ONTO THE SUPERFLEX SHORT HOSE (D), AS IT MIGHT DAMAGE THE HOSE.



Ideally, the bottom surface of the cleaner should rest flat on the pool bottom. Initially, attach the hose weight onto the first male-female long hose (E) from the hose assembly, close to the next male-female long hose (E). NOTE: Do not try to slide the hose weight along the hose as it could cause damage to itself or the hose. Pull the hose weight upward to detach it from the hose.

If the cleaner leans forward, detach the hose weight and move along the male-female long hose (E) towards the cleaner. If the cleaner leans backward, detach the hose weight and move to the next male-female long hose (E).



HOW TO OPERATE THE CLEANER

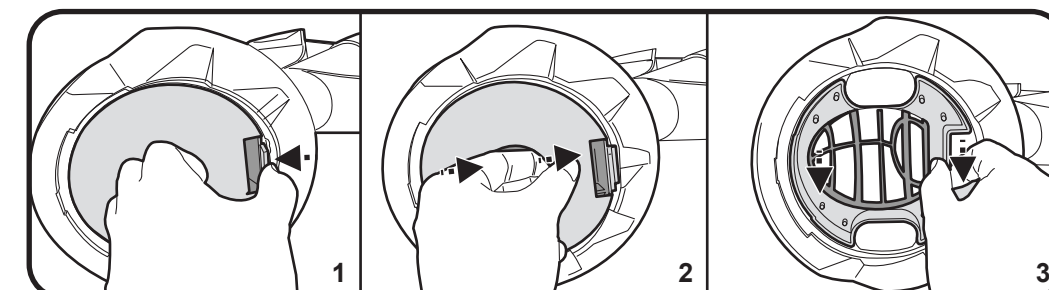
CAUTION! REMOVE THE LADDER FROM THE POOL BEFORE OPERATION

Once your cleaner is connected to the pool water outlet, turn on the pump. Cleaner starts cleaning the bottom of your pool. It will operate automatically until the filter cage is full. Make sure the filter cage is in place during cleaner operation. Otherwise, debris may go through the cleaner to clog your pump.

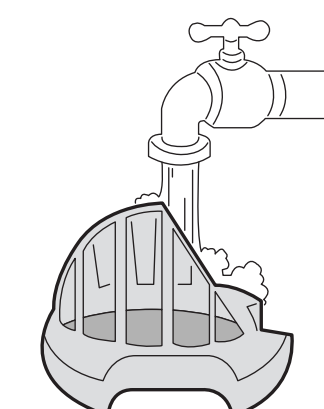
Clean the filter cage and diaphragm regularly to ensure maximum suction.

CLEANING FILTER CAGE/DIAPHRAGM

Switching the filtration system, press on the clip to unlock and slide the bottom plate off the cleaner.



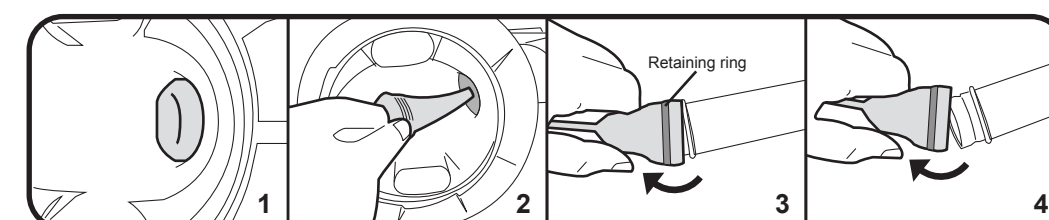
Remove the filter cage and rinse it with clean water. Replace the filter cage if you detect any damage.



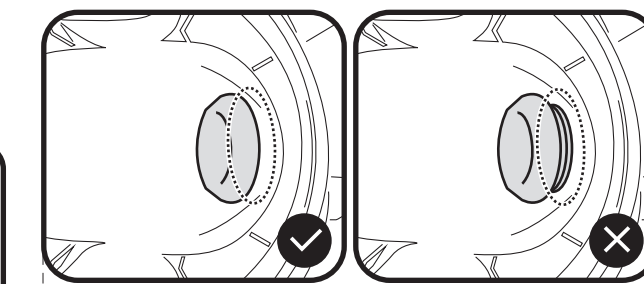
Grip onto the diaphragm and pull it out carefully.

Clear the insides of diaphragm.

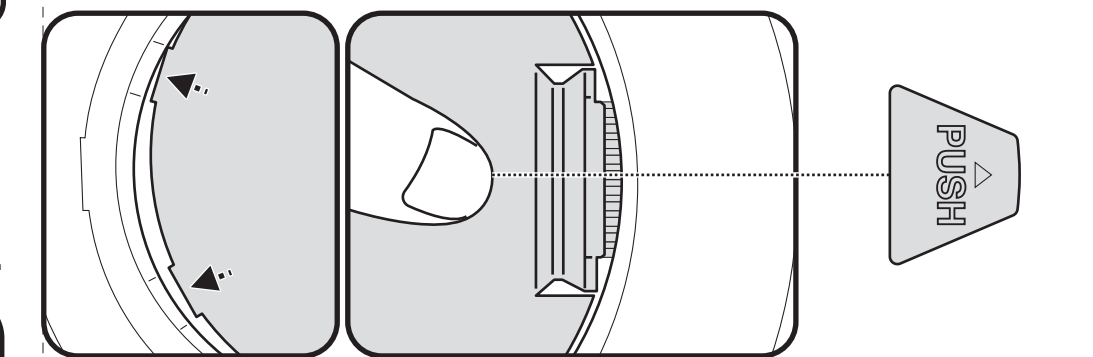
NOTE: Never put sharp object inside diaphragm as it may damage it. After cleaning, reverse the steps to assemble the unit. Make sure the retaining ring is in place.



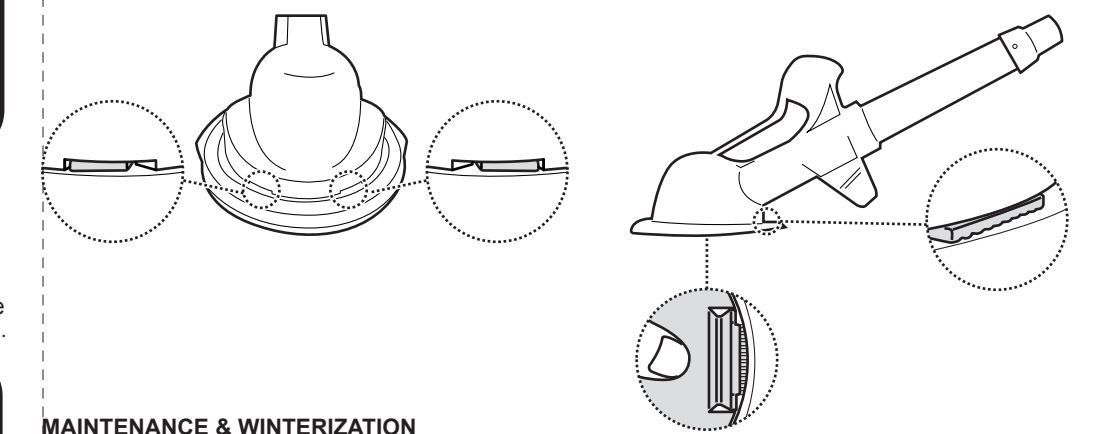
Reverse the steps to reinstall the diaphragm and filter cage into the cleaner. Make sure the diaphragm is completely inserted.



To reinstall the bottom plate, align the 2 small tabs on the base plate with the gaps, then press on the indentation "PUSH" on the base plate until its rib is secured.



NOTE: Make sure that the bottom plate is secured before the next operation.



MAINTENANCE & WINTERIZATION

- Do not coil the hoses.
- Use clean water to rinse the cleaner, hoses, and other accessories after every use.
- Periodically inspect the cleaner parts and accessories. Replace damaged parts before next use.
- For winterization, drain the water from the cleaner and accessories. Disconnect hose sections and store them straight. Store the cleaner and all accessories in a place away from sunlight and chemicals.

TROUBLE SHOOTING

WARNING! TURN OFF THE PUMP BEFORE YOU ATTEMPT TO RESOLVE TROUBLESHOOTING OF ANY KIND.

Problem	Solution
Cleaner does not move or moves slowly	<ul style="list-style-type: none"> • Check to see if there are any air bubbles coming from the pool return line that appear in the pump. Refer to the pump's manual on how to remove the air. • Check to see if there are any air bubbles coming from the hose connections and fittings. Tighten the connections and fittings and inspect them again. Make sure all assemblies are carried out properly. • Check if swivel is placed on wrong position. Position it according to the instruction. Swivel should be positioned under water, otherwise air may go into the hose and then the pump through the swivel. • Check to see if the pump power is adequate. Verify with the information on the pump or with your dealer that the power of your pump is not less than 32W and that the minimum system flow rate is 3.03m³/h or 800gal/h. • Check and see if there is insufficient water flowing through the cleaner. - Check and see if your filtration system is reducing the water flow significantly and consequently the cleaner's suction. If your filtration system consists of a multiport valve, turn the valve to "Circulation" position to bypass the filter. Otherwise, refer to your filtration manual on how to directly steer the water return to the pool. Ensure the filter cage is in placed inside the cleaner. - A solar heater may reduce the flow significantly and affect cleaner suction as a result. In such scenario, use a bypass valve and adjust the bypass valve for the water to flow directly to the pool, skipping the solar panel. • Check to see if the filter cage is full. Clean it if necessary. • Check to see if the diaphragm is clogged with debris. Release the diaphragm and clean out the debris if so. • Check to see if the pressure regulator is releasing excessive water flow. Adjust it according to instructions. • Check to see if the cleaner sticks to the pool bottom. If a pump of flow rate higher than 1500gal/h (5.6m³/h), please refer to "Pressure Regulator Adjustment" to reduce water pressure and suction. • If there are two water outlets in your pool, make sure that the water outlet connected to the cleaner is opened and that the other is closed. • Check if the bottom plate is secured properly at the bottom of the cleaner. • Check if the vacuum plate is securely attached to the strainer of wall skimmer. • Make sure the total length of hose is sufficient according to the instructions. • Make sure the hoses are not kinked or coiled. Lay the hoses under sunlight to straighten the hoses if necessary. • The superflex short hose (D) influences the movement path of the cleaner, allowing a better coverage of the pool. Re-position the superflex short hose (D), which is next to the white short hose (C). However, do not alter the position of the superflex short hose (D) that is attached to the swivel (B) as it will decrease the cleaning pattern of the cleaner. You may also rotate or twist some hose sections because hoses will bend over time, creating a routing pattern in the process. • If there are two water outlets in your pool, make sure that the water outlet connected to the cleaner is opened and that the other is closed. • Check if the bottom plate is secured properly at the bottom of the cleaner. • Check if the vacuum plate is securely attached to the strainer of wall skimmer.
The cleaner's path does not cover the entire pool	<ul style="list-style-type: none"> • The superflex short hose (D) influences the movement path of the cleaner, allowing a better coverage of the pool. Re-position the superflex short hose (D), which is next to the white short hose (C). However, do not alter the position of the superflex short hose (D) that is attached to the swivel (B) as it will decrease the cleaning pattern of the cleaner. You may also rotate or twist some hose sections because hoses will bend over time, creating a routing pattern in the process. • If there are two water outlets in your pool, make sure that the water outlet connected to the cleaner is opened and that the other is closed. • Check if the bottom plate is secured properly at the bottom of the cleaner. • Check if the vacuum plate is securely attached to the strainer of wall skimmer.