

# Bestway®

## #58391

Hmax 1.5m



# FILTER PUMP OWNER'S MANUAL

[www.bestwaycorp.com](http://www.bestwaycorp.com)

Visit Bestway YouTube channel 



**WARNING**  
**IMPORTANT SAFETY INSTRUCTIONS**

**READ AND FOLLOW ALL INSTRUCTIONS**

**WARNING - RISK OF ELECTRIC SHOCK** - The pump is to be supplied by an isolating transformer or supplied through a residual current device (RCD) having a rated residual operating current not exceeding 30 mA.

The appliance must be supplied by earthed power source.

Extension cords can't be used.

**WARNING - RISK OF ELECTRIC SHOCK** - The pump cannot be using while people are inside the pool.

**DO NOT BURY CORD.** Locate cord to minimize abuse from lawn mowers, hedge trimmers, and other equipment.

**WARNING- If the supply cord is damaged, it must be replaced by the manufacturer, its service agent or similarly qualified persons in order to avoid a hazard.**

**CAUTION** - This pump is for use with storable pools only. Do not use with permanently-installed pools. A storable pool is constructed so that it is capable of being readily disassembled for storage and reassembled to its original integrity. A permanently-installed pool is constructed in or on the ground or in a building such that it cannot be readily disassembled for storage.

**IMPORTANT** - Using the pump with an unmatched electrical supply is dangerous and will result in catastrophic failure of pump.

**RISK OF ELECTRICAL SHOCK** - When working with electricity, turn the electrical power off at the circuit breaker and lock breaker door. Failure to do so will result in increased risk of shock, injury and possibly death.

**DO NOT REMOVE THE GROUNDING PRONG OR MODIFY THE PLUG IN ANY WAY. DO NOT USE ADAPTOR PLUGS.** Consult a qualified electrician for any questions related to the validity of your plugs grounding.

Handle the pump with care. Do not pull or carry the pump by the power cord. Never pull a plug from the outlet by yanking the power cord. Keep cord free from abrasions. Sharp objects, oil, moving parts, and heat should never be exposed to the filter pump.

**WARNING** - This appliance is not intended for use by persons (including children) with reduced physical, sensory or mental capabilities, or lack of experience and knowledge, unless they have been given supervision or instruction concerning use of the

appliance by a person responsible for their safety. Children should be supervised to ensure that they do not play with this product.

**CAUTION:** Read the instruction before using the appliance and installation/reassemble each time.

Cleaning and user maintenance must be performed by an adult above 18 years old who is familiar with the risk of electric shock.

**NOTE:** Please examine equipment before use. Notify Bestway at the customer service address listed on this manual for any manufacturing defect or missing parts at the time of purchase. Verify that the equipment components represent the filter pump model that you had intended to purchase.

**NOTE:** Place pump on a solid and level ground. Pay attention to position of pool and pump so adequate ventilation, drainage, and access for cleaning is available. Never place pump in an area that may accumulate water, or in an area where foot traffic will flow around the pool.

It is necessary to have the plug accessible after installation of the pool.

**NOTE:** Atmospheric conditions may affect the performance and life span of your filter pump. Unnecessary wear and tear may occur during periods of cold, heat and exposure to sun. Whenever possible shelter pump from these conditions.

It is important to ensure the factory equipped stopper plugs for the inlet and outlet ports replace the screens before removal or maintenance on the pump is attempted.

**NOTE:** Do not add chemicals in the filter pump.

Don't plug or unplug the appliance if hand is wet.

Always unplug the appliance:

- On raining days
- Before cleaning or other maintenance
- Leave it unattended on holidays

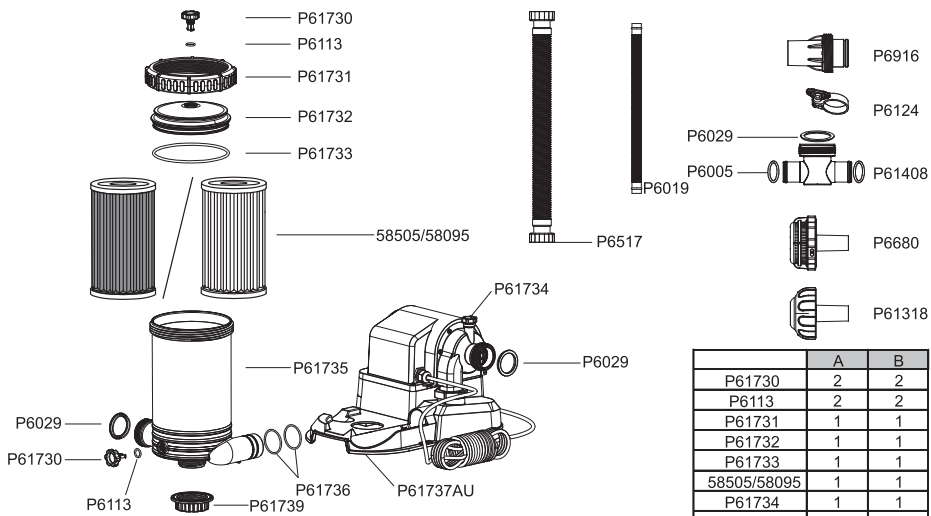
When the appliance will be not used for long time, such as in the winter, the pool set should be disassembled and stored indoor.

Safekeeping the instruction. For reconstruction the pool set every time, please always refer to the instructions.

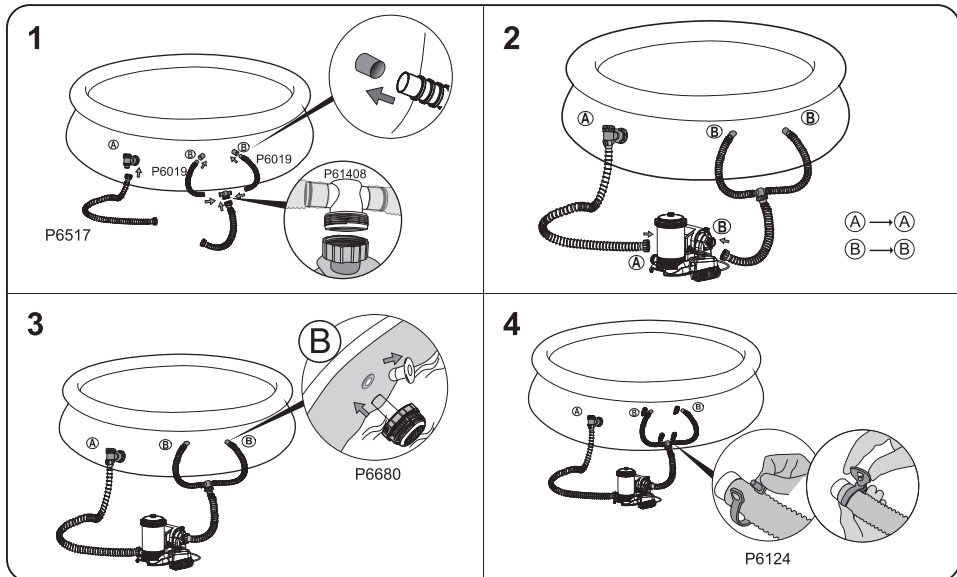
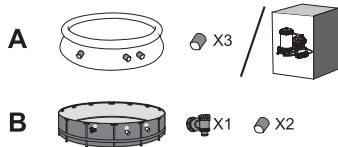
- If instruction is missed, please contact with Bestway or search it in website: [www.bestwaycorp.com](http://www.bestwaycorp.com).

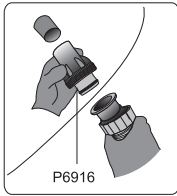
**NOTE:** This product is not intended for commercial use.

**SAVE THESE INSTRUCTIONS.**

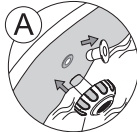


	A	B
P61730	2	2
P6113	2	2
P61731	1	1
P61732	1	1
P61733	1	1
58505/58095	1	1
P61734	1	1
P61735	1	1
P61736	2	2
P61737AU	1	1
P61739	1	1
P6019	2	2
P6517	2	2
P6124	5	4
P6005	2	2
P6029	3	3
P6916	2	2
P61408	1	1
P6680	2	2
P61318	1	0

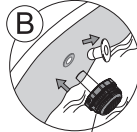




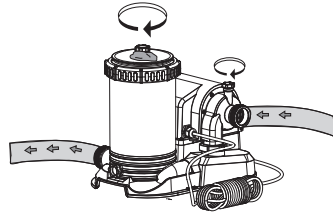
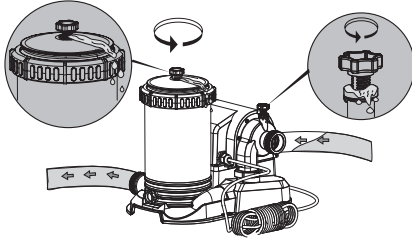
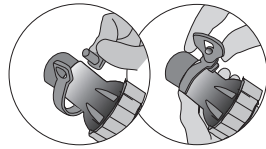
P6916



P61318



P6680



### PEDESTAL FIXING Fig.1

The filter pump must be vertically fixed on ground or a certain pedestal made of wood or concrete before use. There should be two holes 7mm in diameter on the pedestal, the space between which should be 256mm. Put filter pump on the pedestal and fix them together by fasten the bolts and nuts. All the pedestal parts should weigh over 18kgs at least to prevent the pump from accidental falling.

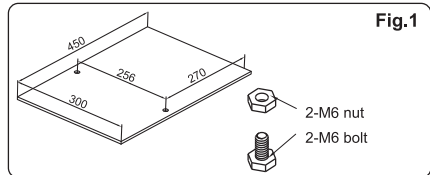


Fig.1

### Operation

- 1) Open/unscrew the Air Purge Valves on the Filter Pump; Air is released as water fills the Filter Pump.
- 2) When water comes out of the Air Purge Valves, screw it closed and wipe away any water.
- 3) To start the Filter Pump, Insert the plug into a residual current device (RCD).
- 4) Turn on the switch to the "I" position.

**IMPORTANT: DO NOT DRY RUN THE FILTER PUMP - Make sure both the pool's Inlet and Outlet valves are fully covered by water before operating the Filter Pump.**

### PUMP MAINTENANCE

**CAUTION: YOU MUST ENSURE THE FILTER PUMP IS UNPLUGGED BEFORE ANY MAINTENANCE BEGINS OR SEVERE RISK OF INJURY OR DEATH EXISTS.**

- 1) Unplug the Filter Pump.
- 2) Stop water flowing to the Filter Pump refer to pool's manual.
- 3) Unscrew the Filter Cap Retainer and remove the Filter Cap.
- 4) Clean the Filter Cartridge with a garden hose.
- 5) Insert the cleaned (or new) Filter Cartridge; ensure it is centered in the Filter Pump.
- 6) Check that the Filter Cap Seal is in place.
- 7) Replace the Filter Cap and screw the Filter Cap Retainer into position.
- 8) Open the valve A and B.
- 9) Follow Pump Installation Directions section to prepare the system for use.

**IMPORTANT: For sanitary reasons we suggest replacing the Filter Cartridge with a new one every two weeks. Flush the filter daily.**

### Winterization and long-term storage

- 1) Unplug the Filter Pump.
- 2) Stop water flowing into the Filter Pump and to remove the Filter Cartridge.
- 3) Discard the Filter Cartridge.
- 4) Detach all Hoses.
- 5) Dry all components thoroughly.
- 6) Store the filter pump in a dry location out of child's reach. Storage temperature: 4-40°C (39.2-104°F)
- 7) Drain the pool according to the Pool Owner's Manual.

### Pump Warranty

For information concerning pump warranty please visit our website at: [www.bestwaycorp.com](http://www.bestwaycorp.com)



For support please visit us at:  
[www.bestwaycorp.com/support](http://www.bestwaycorp.com/support)

**©2018 Bestway Inflatables & Material Corp.**

All rights reserved/Tous droits réservés/Todos los derechos reservados/Alle Rechte vorbehalten/Tutti i diritti riservati

®™ Trademarks used in some countries under license to/

Marques ®™ utilisées dans certains pays sous la licence de/

Marcas comerciales ®™ utilizadas en algunos países bajo la licencia de/

®™ Die Warenzeichen werden in einigen Ländern verwendet unter Lizenz der/

®™ Marchi utilizzati in alcuni paesi concessi in licenza a

**Bestway Inflatables & Material Corp., No.3065 Cao An Road, Shanghai, 201812, China.**

Manufactured, distributed and represented in the European Union by/

Fabriqués, distribués et représentés dans l'Union Européenne par/Fabricado, distribuido y representado en la Unión Europea por/

Hergestellt, vertrieben und in der Europäischen Union vertreten von/Prodotto, distribuito e rappresentato nell'Unione Europea da

**Bestway (Europe) S.r.l., Via Resistenza, 5, 20098 San Giuliano Milanese (Milano), Italy**

Distributed in North America by/Distribués en Amérique du Nord par/Distribuido en Norteamérica por

**Bestway (USA) Inc., 3411 E. Harbour Drive, Phoenix, Arizona 85034, United States of America** Tel: 1-855-838-3888 (For U.S. and Canada)

Distributed in Latin America by/Distribués en Amérique latine par/Distribuido en Latinoamérica por/Distribuido na América Latina por

**Bestway Central & South America Ltda, Salar Ascotan 1282, Parque Enea, Pudahuel, Santiago, Chile**

Distributed in Australia & New Zealand by **Bestway Australia Pty Ltd, 98-104 Carnarvon Street, Silverwater, NSW 2128, Australia**

**[www.bestwaycorp.com](http://www.bestwaycorp.com)**

Made in China / Fabriqué en Chine / Fabricado en China / Hergestellt in China / Prodotto in Cina